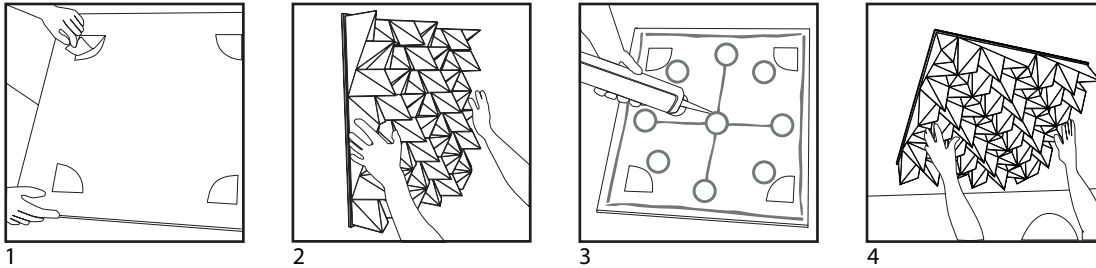


ATP® CORALREEF & BASMEL SIDECOVERED

1. Prior to application, always clean all surfaces before applying any glue ensuring them free of dust or grease.
2. Mark the measurements of the panel on the surface you are applying the panel to.
3. Apply double sided temporary adhesive patches to the back of the panel as shown.
4. The adhesive temporary patches are activated by pressure. To ensure their maximum adhesion strength they are not repositionable, so measure twice and glue only once. *For ceiling panels a temporary auxiliar supporting bar (anchor) between the floor and the panel, can be used. Ensure taking extra care to always use a protective thick and enough dense and very clean material like foam (or a dense pillow) between the panel and the anchor to ensure not to damage the surface.

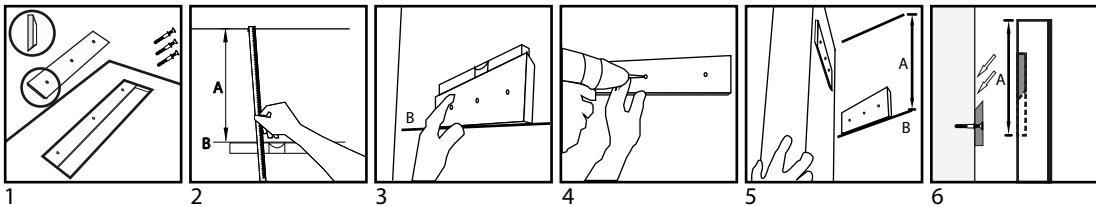


Warning:

Adhesion time depends entirely on the weight of the panel to be glued. Always consult the specifications of the mounting glue. Adhesive bonding times may vary depending on humidity and temperature. Make sure that the temperature and humidity in the room are within the acceptable values for the product available on our website.

ATP® CTBASS

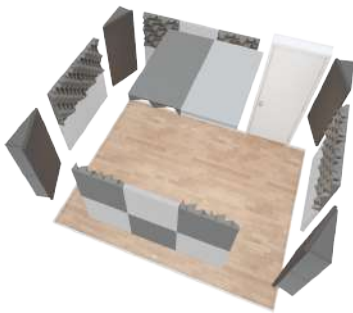
1. The product is supplied with the necessary accessory kit.
2. Measure panel placement using a tape measure, pencil, ruler and spirit level.
3. From the top line of the panel, measure and mark distance "A" orthogonally. With a level, define the "B" line.
4. Center the accessory on the wall, inserting a pencil through the holes in the wooden accessory to mark the necessary points on the wall.
5. Drill the holes in the wall. Insert the nylon plugs into the wall and secure the accessory with a screwdriver.
6. Then fit the panel into the mounting accessory.



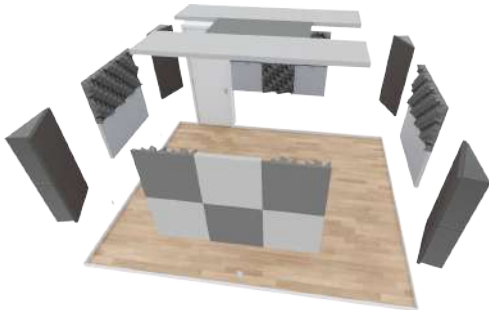
ATP® PACK CT 1



ATP® PACK CT 1.1



ATP® PACK CT 2



ATP® PACK CT 2.2

