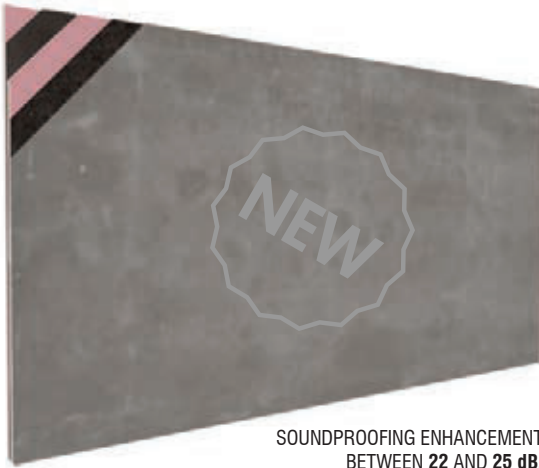




STILLNESS IV[®]

SOUNDPROOFING PLATES



SOUNDPROOFING ENHANCEMENT
BETWEEN 22 AND 25 dB.



Image of STILLNESS IV, Ret.:STLLIV, Soundproofing Plates of five layers.

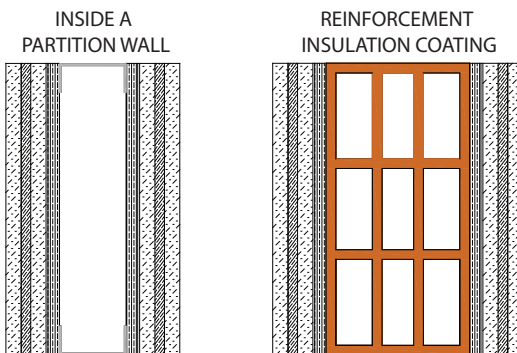
FEATURES

- Depending on the constitution of the base of the wall or ceiling, this material can enhance the sound insulation between **22** and **25** db.
- Reduces sound transmission loss property.
- Installation: with screws or contact glue.
- Fire-resistance: B-s1,d0 (similar to M1).
- Environmentally friendly material.
- High-density board surface, paintable.
- Suitable for usage in large areas of construction.
- Total thickness: 5,6 cm (2 1/5").
- The fact that it uses layers of Type X FR Gypsumboard and cement fibre board, enables its usage in construction as a fire barrier.

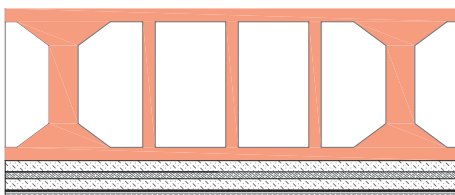
SIZES AND SPECIFICATIONS

MODELS	HEIGHT	WIDTH	DEPTH	WEIGHT
STLL IV	244 cm (8' 0 0/1")	120 cm (3' 11 1/4")	5.6cm (2 1/5")	109,02 Kg (240.35 lbs)

WALL APPLICATION



CEILING APPLICATION



DESCRIPTION

STILLNESS is a damping system and sound insulation board composed of anti-vibration and massive elements. We've selected inorganic materials with different densities and thicknesses to form a composite layer with the best properties of sound insulation and vibration damping in order to effectively insulate the medium-low and low frequencies of the sound transmission. STILLNESS IV is composed of a 5 layer system built off the STLL III. Adding a top layer of high quality type X FR gypsum board, followed by our 10 mm FLOATSHEET INS, high quality type X FR gypsum board, our 2 mm FLOATSHEET VIB and finished off with cement fiber board, this combination can enhance the sound insulation between 22 and 25 dB, depending on the construction of the base of the wall or ceiling. This model has the second highest db reduction and is only 5.6 cm thick. The layers of each compound model are pressed and adhered under high pressure. These composite vibration damping and sound insulation boards are much more practical than the traditional layer-by-layer construction and provides an effective sound reduction rate of walls and ceilings in all types of applications, from the music business to the industrial market.

COMPOSITION

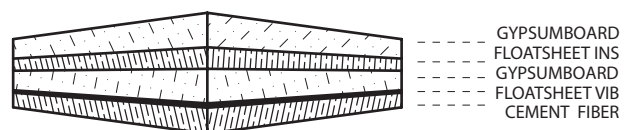
STILLNESS® IV is composed by:

- 1 layer of (16mm | 5/8") Type X FR Gypsumboard,
- 1 layer of (10mm | 2/5") Polyurethane - Floatsheet® INS,
- 1 layer of (16mm | 5/8") Type X FR Gypsumboard,
- 1 layer of (2mm | 0/1") Floatsheet® VIB and
- 1 layer of (12mm | 1/2") cement fibre board.

DIMENSIONS

	cm	inch
	1,6	5/8"
	1,0	2/5"
	1,6	5/8"
	0,2	0/1"
	1,2	1/2"
	5,6	2 1/5"

COMPOSITION



NOTICE

- JOCAVI® accepts no responsibility for any printing errors. Specifications can be modified without prior notice, if technical or commercial reasons so require.
- The colours shown on this catalogue are only a reference and an illustration of the products finishing. The colours shown are not binding because brightness, contrast and colour balance may vary due to the printing process.
- Colours may vary due to raw-material suppliers' changes and some differences may occur in tonal range. Sizes may vary slightly due to their production method and some inherent raw-materials characteristics.