



# STILLNESS I<sup>®</sup>

## SOUNDPROOFING PLATES



SOUNDPROOFING ENHANCEMENT  
BETWEEN 13 AND 15 dB.



Image of STILLNESS I, Ref.:STLLI, Soundproofing Plates of two layers

### FEATURES

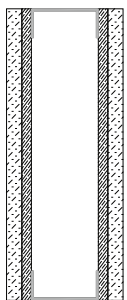
- Depending on the constitution of the base of the wall or ceiling, this material can enhance the sound insulation between **13** and **15** db.
- Reduces sound transmission loss property.
- Installation: with screws or contact glue.
- Fire-resistance: B-s1,d0 (similar to M1).
- Environmentally friendly material.
- High-density board surface, paintable.
- Suitable for usage in large construction areas.
- Total thickness: 2.6 cm (1 0/1").
- The fact that it uses layers of Type X FR Gypsumboard and cement fibre board, enables its usage in construction as a fire barrier.

### SIZES AND SPECIFICATIONS

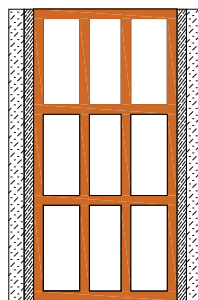
MODELS	HEIGHT	WIDTH	DEPTH	WEIGHT
STLL I	<b>244 cm</b> (8' 0 0/1")	<b>120 cm</b> (3' 11 1/4")	<b>2.6 cm</b> (1 0/1")	<b>25.96 Kg</b> (57.22 lbs)

### WALL APPLICATION

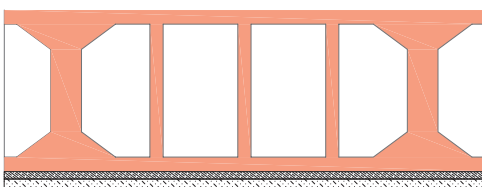
INSIDE A  
PARTITION WALL



REINFORCEMENT  
INSULATION COATING



### CEILING APPLICATION



### DESCRIPTION

STILLNESS is a damping system and sound insulation board composed of anti-vibration and massive elements. We've selected inorganic materials with different densities and thicknesses to form a composite layer with the best properties of sound insulation and vibration damping in order to effectively insulate the medium-low and low frequencies of the sound transmission. STILLNESS I is composed of a dual layer system made of high quality type X FR gypsum board and our 10 mm FLOATSHEET INS, when paired they can enhance the sound insulation between 13 and 15 dB, depending on the construction of the base of the wall or ceiling. This our base and most compact model. The layers of each compound model are pressed and adhered under high pressure. These composite vibration damping and sound insulation boards are much more practical than the traditional layer-by-layer construction and provides an effective sound reduction rate of walls and ceilings in all types of applications, from the music business to the industrial market. This multi-layer structure is portable and simple to install by using screws or contact glue and it is easy to cut to adjust to the room dimensions.

### COMPOSITION

- STILLNESS® I is composed by:
- 1 layer of (10mm | 2/5") Polyurethane - Floatsheet® INS,
  - 1 layer of (16mm | 5/8") Type X FR Gypsumboard,

### DIMENSIONS

cm		inch	
1,6	2,6	5/8"	1 0/1"
1,0		2/5"	

### COMPOSITION



### NOTICE

- JOCAVI® accepts no responsibility for any printing errors. Specifications can be modified without prior notice, if technical or commercial reasons so require.
- The colours shown on this catalogue are only a reference and an illustration of the products finishing. The colours shown are not binding because brightness, contrast and colour balance may vary due to the printing process.
- Colours may vary due to raw-material suppliers' changes and some differences may occur in tonal range. Sizes may vary slightly due to their production method and some inherent raw-materials characteristics.