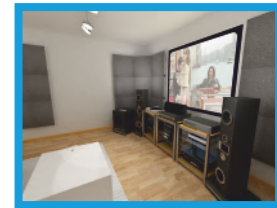
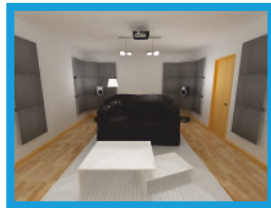




Sabine: 0.51 sec



### DESCRIPTION

The **STAITREAT®** is an innovative modular system designed to aesthetically conceal the acoustic treatment in its room in a very sober manner. As the engineering portion of each model, the **STAITREAT®** consists of three different models with very different acoustic absorption curves and performance. The semi-transparent mineral granulate plate also combines the absorption and unidirectional micro-diffusion features. The different specificities of each model are well combined to fit the room's requirements. This range of panels is particularly meant for small and medium-sized rooms that require an outstanding acoustic balance. The **KITBOX** set has been created for home-cinemas, studios, conference halls and auditoriums providing them with a very pleasant atmosphere.

The **JOCAVI® KITBOX 02** has been created for small-sized home-cinema rooms, home-studios and rehearsal rooms measuring between 17 and 24 square m<sup>2</sup> (182.99 ft<sup>2</sup> and 258.33 ft<sup>2</sup>). The **JOCAVI® KITBOX 02** approach consists in adjusting the room dimensions to sizes which are slightly bigger than those of the **JOCAVI® KITBOX 01**. The acoustic treatment modules must also be placed in relation to the listener and the speakers, while minimising the SBIR (speaker boundary interference response) and the modal emphasis to produce a frequency response as flat as possible in the room. Give your ears an opportunity to see how the performance of your sound system improves. All packs are supplied with assembly instructions, as well as the glues and tools which are necessary to install the acoustic modules.

### WHERE TO APPLY :

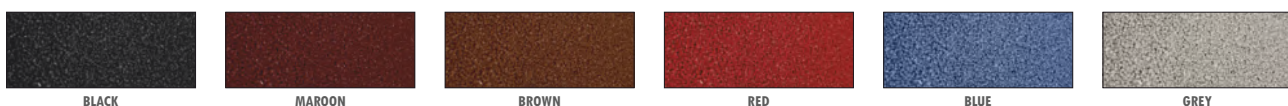
Rooms with an area between: 17 and 24 square meters (182.99 ft<sup>2</sup> and 258.33 ft<sup>2</sup>).  
Rooms with volumes between: 45 and 58 cubic meters (1589 ft<sup>3</sup> and 2048 ft<sup>3</sup>).

For use in small and medium-sized home-theatre rooms, home-studios, Hi-fi rooms or instrument rooms.

### FEATURES

- Values were obtained by simulation in specific JAS® software and later confirmed through acoustic analyses in the rooms.
- The simulated rooms were tested with all the materials and equipments shown in the images, and the mentioned **JOCAVI® KITBOX 02** acoustic panels.
- Traditional room with dimensions (L,W,H): **5.82m / 4.00m / 2.50m** (229.1" / 157.5" / 98.4").  
Walls: masonry with painted fine stuff and a wooden door.  
Ceiling: 12 mm (0.5") - thick plaster.  
Floor: natural floating parquet.

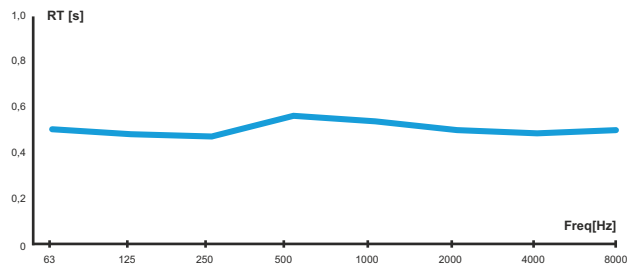
### STANDARD MINERAL GRANULATED COLOURS



### IMPORTANT NOTICES

- JOCAVI® accepts no responsibility for any printing errors. Specifications can be modified without prior notice, if technical or commercial reasons so require.
- The colours shown on this catalogue are only a reference and an illustration of the products finishing. The colours shown are not binding because brightness, contrast and colour balance may vary due to the printing process.
- Colours may vary due to raw-material suppliers' changes and some differences may occur in tonal range.
- Typical Indoor Comfort Standards state a temperature range of 20°C - 27°C (68°F - 81°F), and a relative humidity of less than 60%. These would be considered as normal operational levels of JOCAVI® products' range.
- Sizes may vary slightly (+/-3mm) due to their production method and some inherent raw-materials characteristics.

### ABSORPTION COEFFICIENT AND GRAPHIC



FREQUENCY	63 Hz	125 Hz	250 Hz	500 Hz	1 KHz	2 KHz	4 KHz	8 KHz
αS	0.50	0.48	0.47	0.57	0.56	0.50	0.49	0.51

Sabine: 0.51 sec

### KITBOX 02 QUANTITIES

REFERENCE	PANELS	UNITS	DIFFUSOR	ABSORBENT	TUNED
BXA060	Staidtreat®BXA	12	—	—	✓
BXW060	Staidtreat®BXW	12	—	—	✓
WBA060	Staidtreat®WBA	18	—	✓	—

